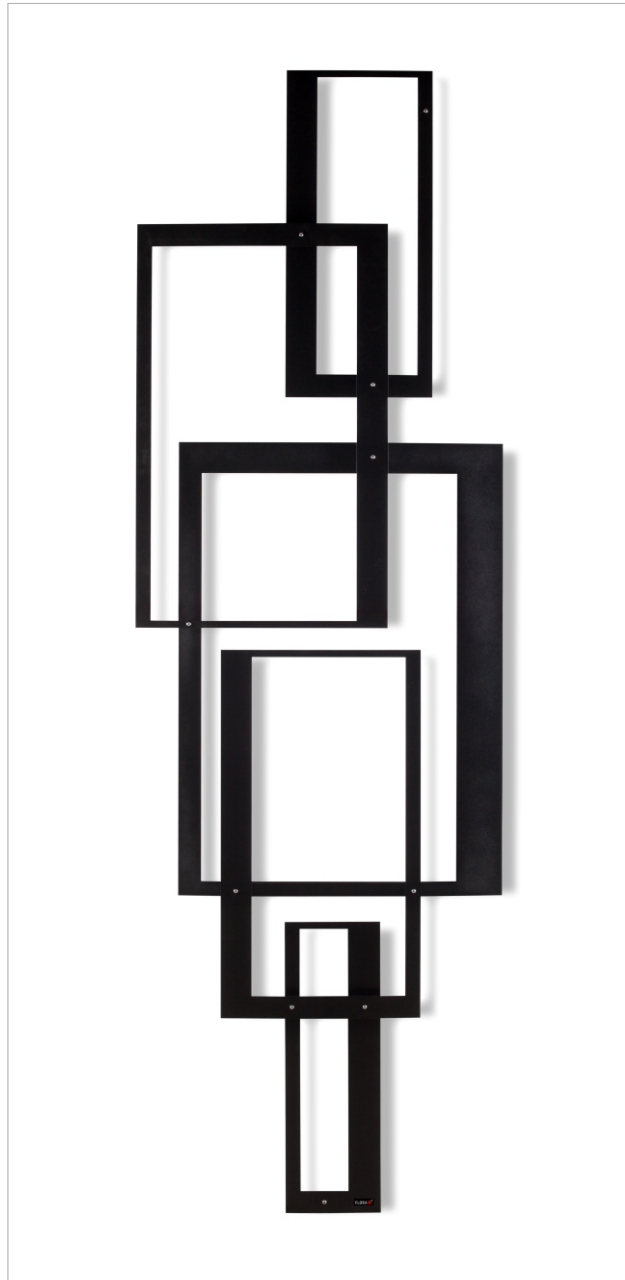


Piet

Michael Koenig 2012

FLORA 



Piet trellis is punched from one piece of sheet metal in 800 x 1100 mm without any waste. With the five parts out of this you can montage a trellis of the large size 900 x 2400 mm to the wall. The overlaps of the layers give the piece a three dimensional impression and remind to modern art work

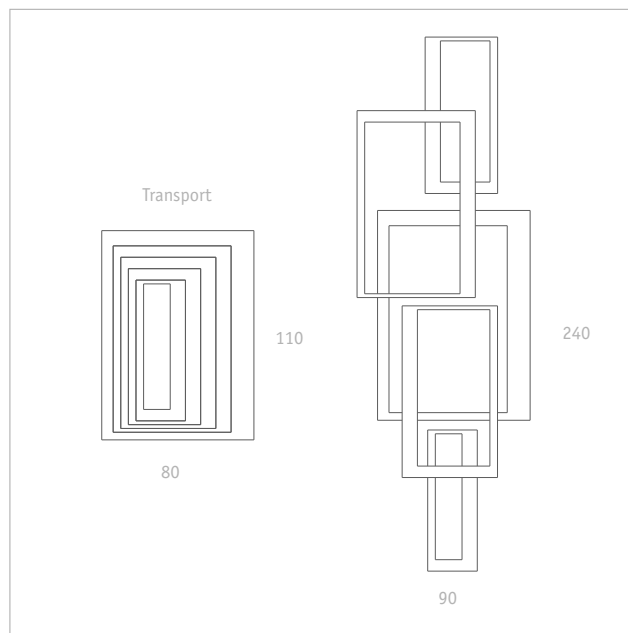
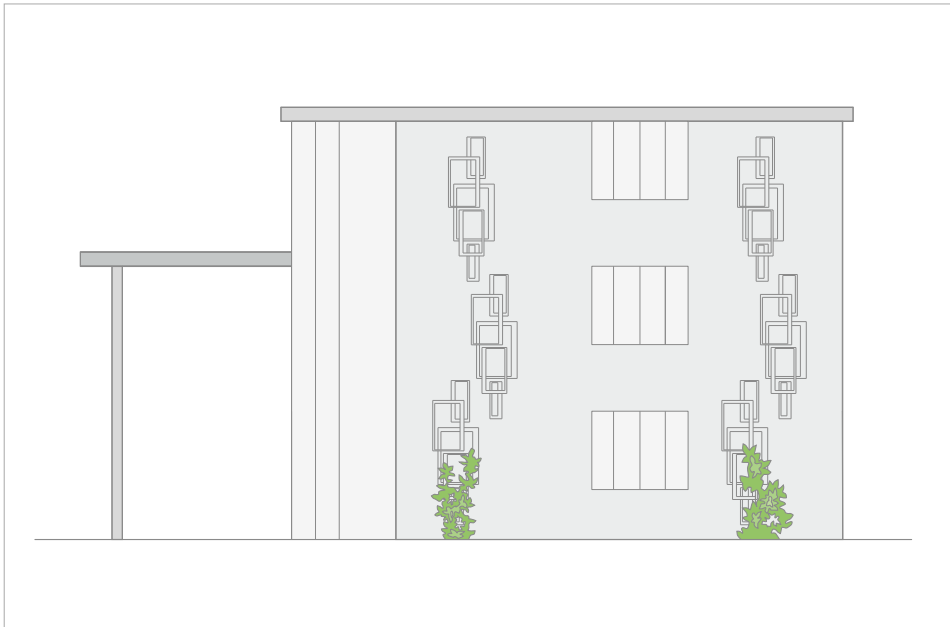
FLORA Wilh. Förster
GmbH & Co. KG

Schmidtsiepen 3
58553 Halver
Germany

Phone +49 (0)2353 9117-0
Fax +49 (0)2353 9117-17
E-Mail info@flora-online.de
Internet www.flora-online.de

Piet

Michael Koenig 2012



Art trellis, zinc plated sheet metal, powder coated black, with assembly kit

FLORA Wilh. Förster
GmbH & Co. KG

Schmidtsiepen 3
58553 Halver
Germany

Phone +49 (0)2353 9117-0
Fax +49 (0)2353 9117-17
E-Mail info@flora-online.de
Internet www.flora-online.de